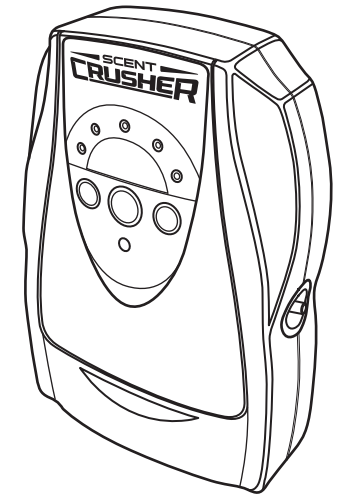
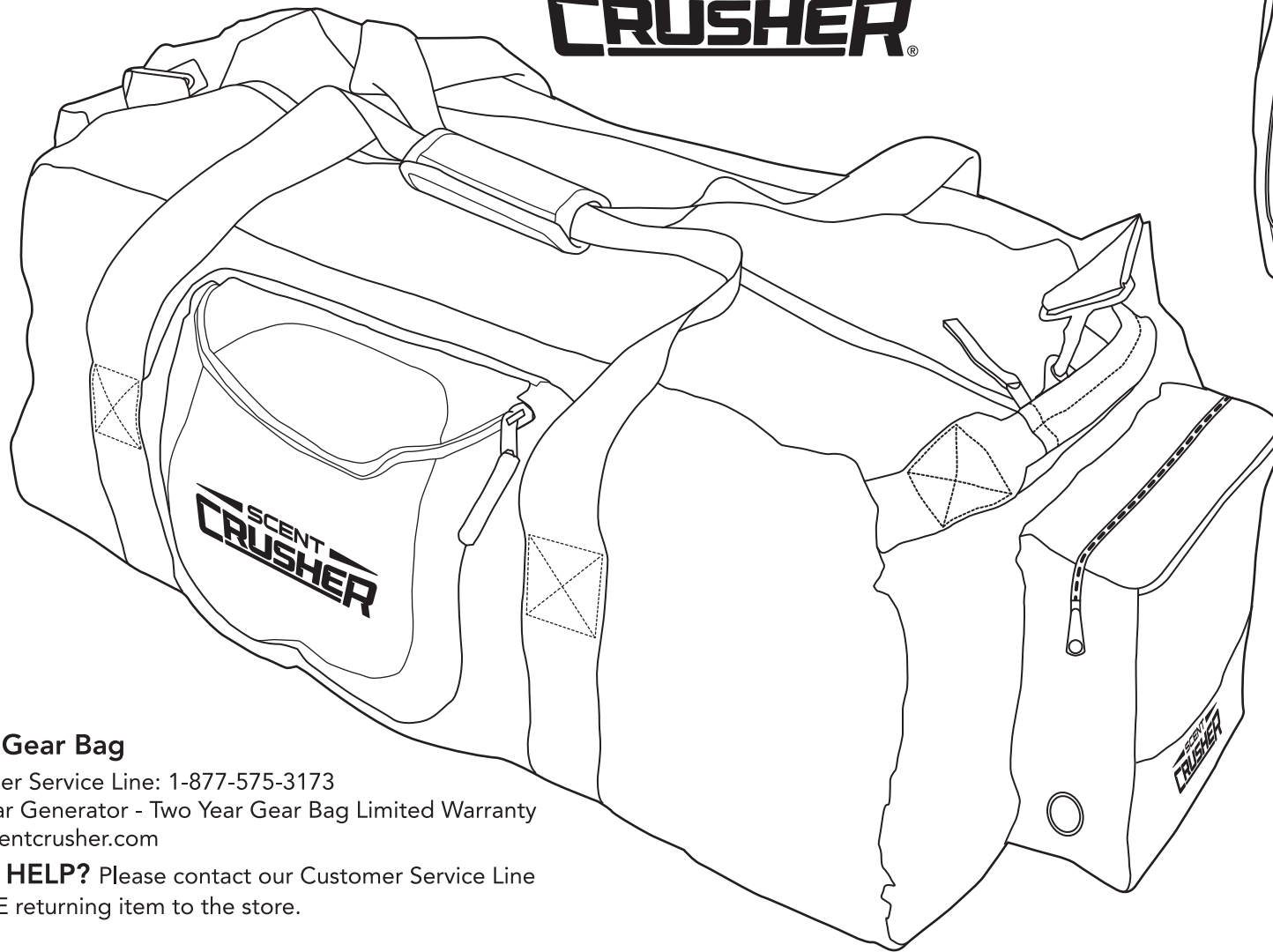


MOSSY OAK GEAR BAG

Instructions to insert Ozone Machine



Large Gear Bag

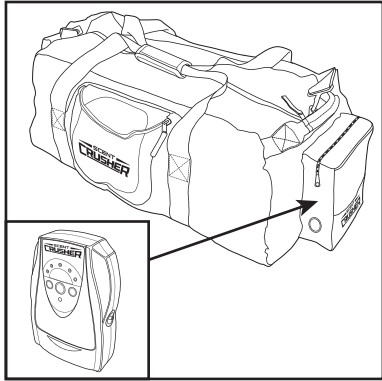
Customer Service Line: 1-877-575-3173

Five Year Generator - Two Year Gear Bag Limited Warranty
www.scentcrusher.com

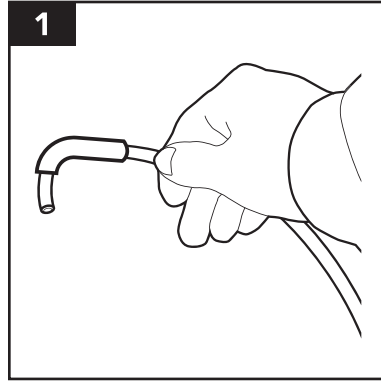
NEED HELP? Please contact our Customer Service Line
BEFORE returning item to the store.

A division of  **MoJack**
3535 N. Rock Road
Wichita, KS 67226
1-877-575-3173
www.scentcrusher.com

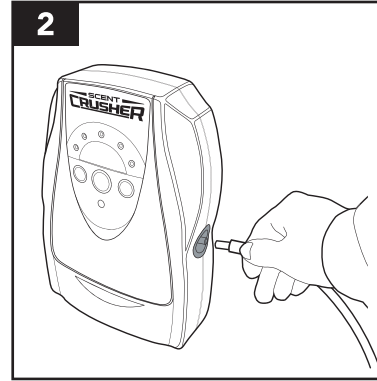
CAUTION! Read the Ozone Machine Instruction Manual and the warning label tags before operation.



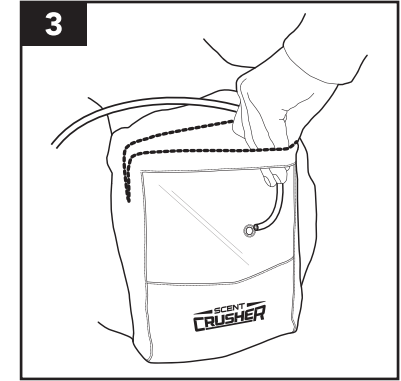
The Ozone Machine will be housed in the pouch located on the side of the bag.



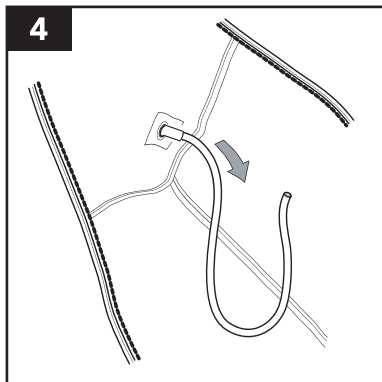
The Pinch Protector is designed to keep the silicon hose from bending or pinching. Slide the hose through Pinch Protector, then hose connects to the ozone air outlet.
NOTE: The silicon hose will connect in the outlet, not the Pinch Protector.



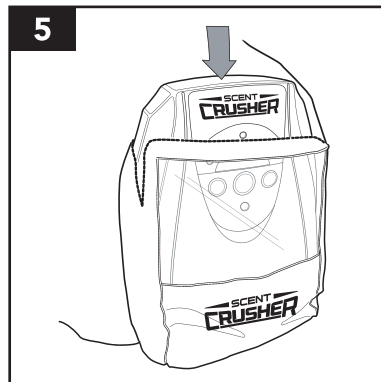
Attach the hose to the Ozone Machine. The hose will transport the ozone from the machine into the bag.



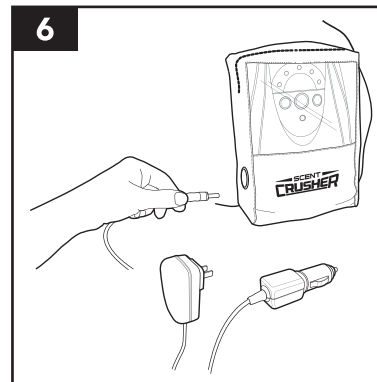
Feed the hose through the hole located on the inside of the pouch.



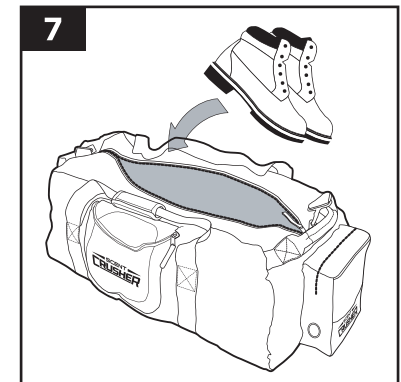
Pull the hose through the hole from the inside of the bag. The end of the Pinch Protector should extend through the hole.



You can now insert the Ozone Machine into the pouch.



Use a wall outlet or car adapter to power the Ozone Machine.



Put items to deodorize in the bag and zip the bag completely closed.

See the Ozone Machine Instruction Manual for operating settings.